



GRAVELLY®

**5000 SERIES
CONVERTIBLE
TRACTORS
ILLUSTRATIVE
PARTS LIST**

Form No. 23359 (9-77) Printed In U S A

BrentChalmers.com

5000 Series Convertible Tractor
Parts List

This manual covers the following models:

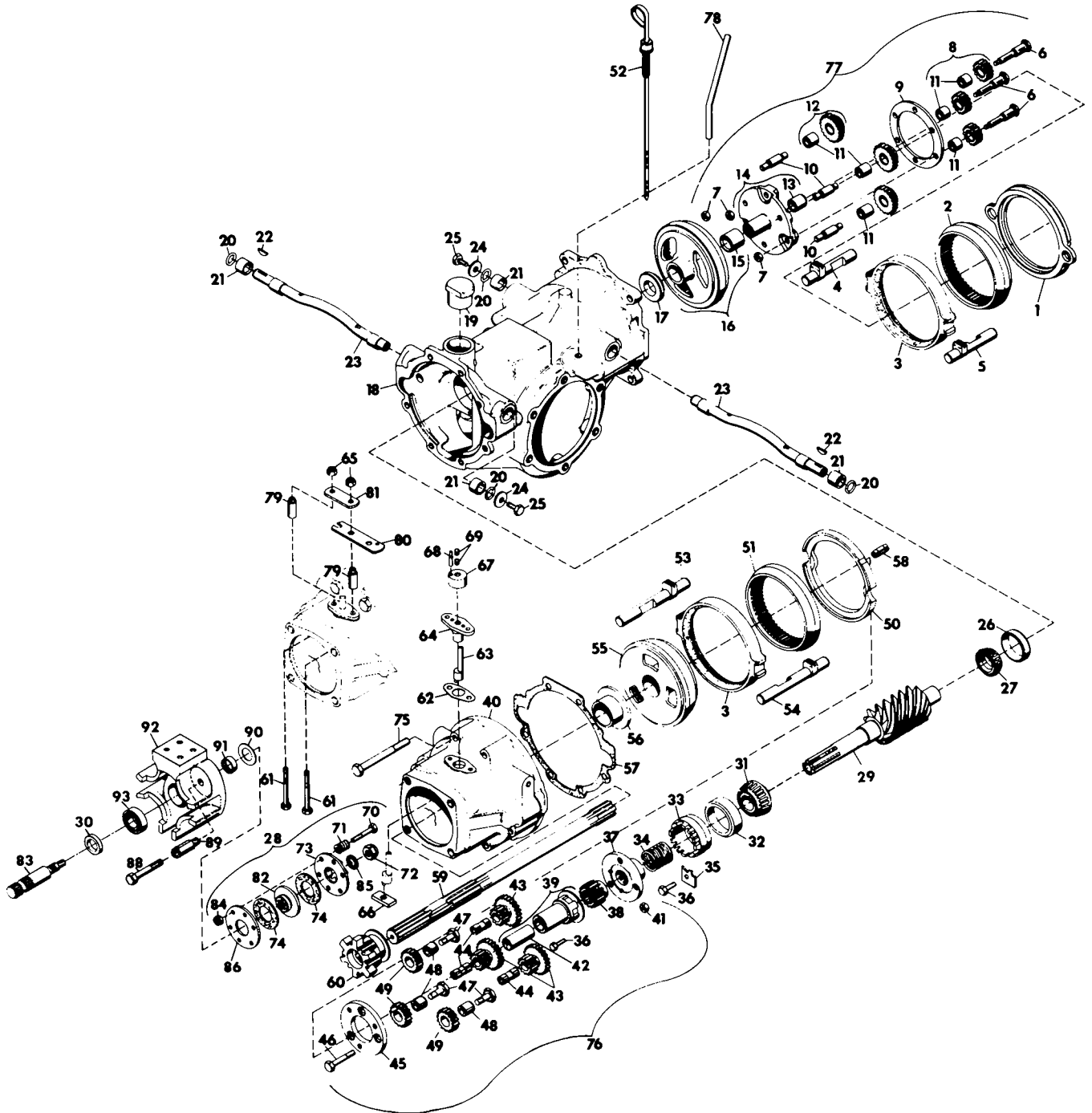
	<u>MODEL NO.</u>
5200 -	23067
5220 -	23066
5240 -	23065
5460 -	23061
5660 -	23062

TO CONTINUE ITS PROGRAM OF QUALITY AND DESIGN IMPROVEMENT, THE MANUFACTURER
RESERVES THE RIGHT TO CHANGE SPECIFICATIONS, DESIGNS AND PRICES WITHOUT NOTICE
AND WITHOUT INCURRING OBLIGATION

CONTENTS

	Page
Basic Transmission	2
Standard Differential	4
Swiftamatic Differential	6
Frame Assembly	8
Frame Assembly	10
Controls	12
Wheel Assembly	13
Engine & Exhaust System	14
Electrical System	15
Wiring Diagram	16

BASIC TRANSMISSION



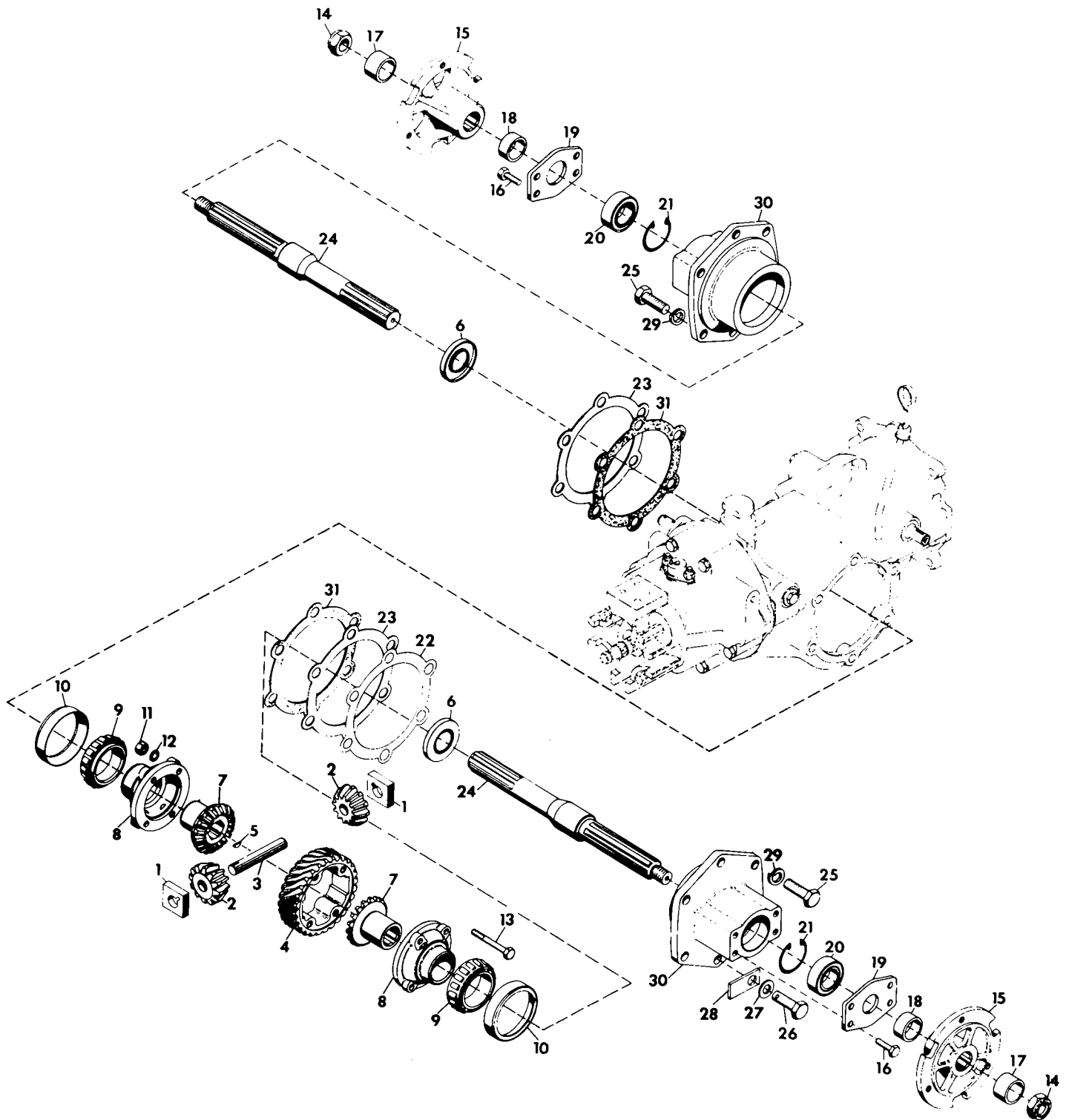
<u>ITEM NO.</u>	<u>PART NO.</u>	<u>DESCRIPTION</u>
1	11183	Spacer, Rear
2	11182	Gear, Rear Ring
3	12644	Assembly, Clutch Cup
4	11185	Rod, Rear R.H. Clutch Slide
5	11184	Rod, Rear L.H. Clutch Slide
6	11181	Bolt, Orbit Gear
7	11342	Nut, Lock; 5/16-18 L.H. Thread
8	11179	Assembly, External Orbit Gear
9	11178	Spacer, Pin
10	11174	Pin, Hi-Lo Orbit Gear
11	11177	Bushing; .501 x .627 x .495
12	11175	Assembly, Internal Orbit Gear
13	11172	Bushing; .737 x .877 x .69
14	11171	Assembly, Planet Gear Carrier

BremChalmers.com

BASIC TRANSMISSION

ITEM NO.	PART NO.	DESCRIPTION
15	11169	Bushing; 1.250 x 1.502 x 1.312
16	11168	Assembly, Ring Gear and Bushing
17	12645	Plate, Rear Thrust
18	10628	Chassis
19	10617	Plug, Oil Filler
20	10663	O-Ring; .750 x 1.00
21	10618	Bushing; .750 x 1.002 x .625
22	124545	Key, Woodruff; .125 x .625 Hard
23	10625	Shaft, Actuating
24	12694	Washer, Flat; .265 x 1.250 x .063
25	180016	Bolt, Hex; 1/4-20 x .500
26	10390	Cup, Roller Bearing
27	10389	Cone, Roller Bearing
28	22484	Assembly, Clutch Attachment
29	21241	Weldment, 4 Lead Worm (5210)
	21242	Weldment, 6 Lead Worm (5200, 5220)
	21243	Weldment, 8 Lead Worm (5240, 5260, 5460, 5640, 5660)
30	11841	Ring, Steel Retaining; .978 x 1.500 x .300
31	12332	Cone, Roller Bearing
32	12333	Cup, Roller Bearing
33	12635	Nut, Bearing Adjustment
34	12663	Spacer, Spring Pin Plate
35	12648	Nut, Adjusting
36	180018	Bolt, Hex; 1/4-20 x .625
37	12633	Plate, Front Pin
38	12637	Gear, Sun Pinion Spur
39	14923	Assembly, Quill and Bushing
40	12587	Casting, Advance
41	120375	Nut, Hex; 1/4-20
42	12662	Bushing; .875 x 1.000 x 2.000
43	12639	Gear, Orbit Spur
44	12640	Pin, Fwd-Rev Orbit Gear (Steel)
45	12655	Spacer, Front Pin
46	12643	Bolt, Spacer (R.H.)
47	12658	Bolt, Reverse Idler
48	12657	Bushing, Reverse Idler; .375 x .685 x .516
49	12656	Gear, Reverse Idler Spur
50	12636	Cup, Gear
51	12632	Gear, Internal Spur
52	10622	Assembly, Dipstick
53	12677	Rod, R.H. Clutch Slide
54	12678	Rod, L.H. Clutch Slide
55	12654	Cone, Reverse Gear
56	14921	Assembly, Thrust Bearing
57	12591	Gasket, Front Chassis
58	13456	Pin, Roll
59	11298	Shaft, Pinion
60	12660	Dog, Attachment
61	180089	Bolt, Hex; 5/16-18 x 2.250
62	18318	Gasket, Shipper Shaft
63	10686	Shaft, Shipper
64	23034	Guide, Shipper Shaft
65	419455	Nut, Lock; 5/16-18 Washer Insert
66	12601	Block, Trunnion
67	10688	Body, Shipper Shaft
68	12320	Dowel, Shifter Body
69	102591	Screw, Set; 3/8-16 x .25 Hex Socket
70	181618	Bolt, Hex; 5/16-24 x 1.750
71	12871	Spring, Compression; .750 x 2200 Lb/in
72	13419	Nut, Flywheel
73	12867	Plate, Dog
74	12870	Washer, Friction
75	180735	Bolt, Hex; 5/16-18 x .750
76	14922	Assembly, Fwd-Rev Planetary
77	14615	Assembly, Hi-Lo Planetary
78	10586	Guide, Dipstick
79	12123	Spacer, Shipper Shaft Guide
80	12122	Arm, Shifter
81	20822	Spacer, Strap
82	22480	Plate, Drive
83	22482	Shaft, Quick Hitch
84	18277	Nut, Lock; 5/16-24 L.T.
85	138557	Washer, Lock; 5/8 Internal Tooth
86	12868	Plate, Back
88	180173	Bolt, Hex; 1/2-13 x 1.00
89	22479	Stud, Quick Hitch
90	11983	Bearing, Thrust; 1.012 x 1.750 x .135
91	11227	Bearing, Needle; 1.000 x .750 x .000
92	22483	Adapter, Quick Hitch
93	11293	Bearing, Ball; 1.000 x 2.000 x .562

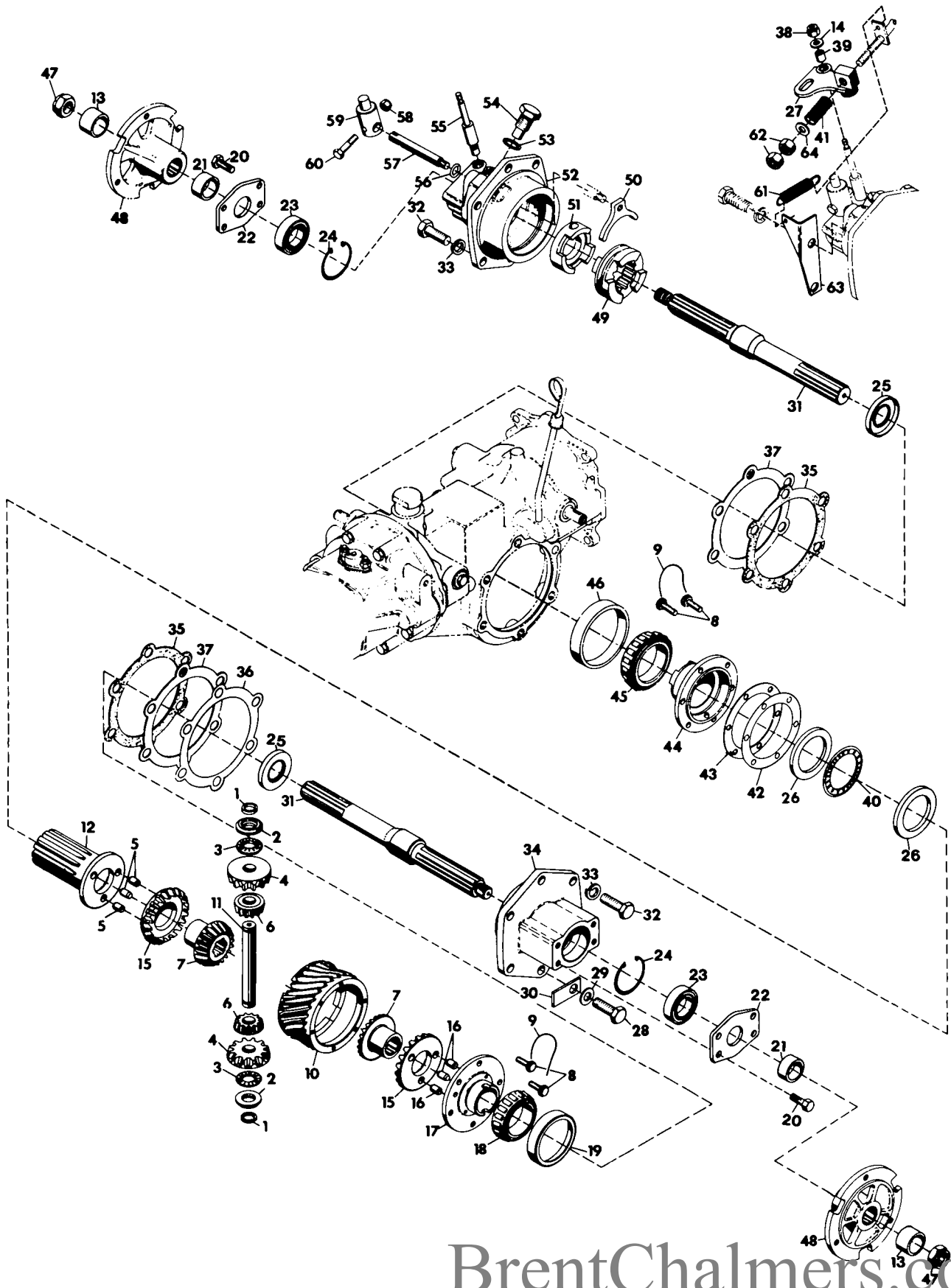
STANDARD DIFFERENTIAL



STANDARD DIFFERENTIAL

<u>ITEM NO.</u>	<u>PART NO.</u>	<u>DESCRIPTION</u>
1	22505	Block, Drive
2	6708	Gear, Spider Bevel
3	12556	Pin, Spider Pinion
4	13497	Gear, 4-Lead Worm
	13498	Gear, 6-Lead Worm
5	271089	Key, Woodruff; .125 x .375 Hard
6	22506	Seal, Oil; 1.188 x 2.000 x .250
7	6709	Gear, Differential Bevel
8	22504	Housing, Differential
9	12131	Cone, Roller Bearing
10	12130	Cup, Roller Bearing
11	120368	Nut, Hex; 5/16-24
12	138538	Washer, Lock; 5/16 Int. Tooth
13	181623	Bolt, Hex; 5/16-24 x 2.75
14	22502	Nut, Lock; 3/4-10 L.T.
15	22507	Hub, Wheel; 4.80 x 4.00-8
	22551	Hub, Wheel; 18 x 8.50-8
16	180120	Bolt, Hex; 3/8-16 x .75
17	22512	Spacer; 1.000 x 1.385 x 1.125
18	22501	Spacer; 1.000 x 1.385 x .509
19	22503	Plate, End
20	11293	Bearing, Ball; 1.000 x 2.000 x .562
21	22497	Ring, Retaining; 2.000 Bore
22	12596	Shim, Axle Housing; .020
23	12595	Shim, Axle Housing; .005
24	22493	Axle, Straight
25	180173	Bolt, Hex; 1/2-13-1.0
26	13624	Bolt, Hex; 1/2-13 x 1.0 Nylon Insert
27	120396	Washer, Flat; .500 x 1.062 x .095
28	12594	Washer, Oil Drain
29	120384	Washer, Lock; .500 SP
30	22495	Housing, Axle
31	12597	Gasket, Axle Housing

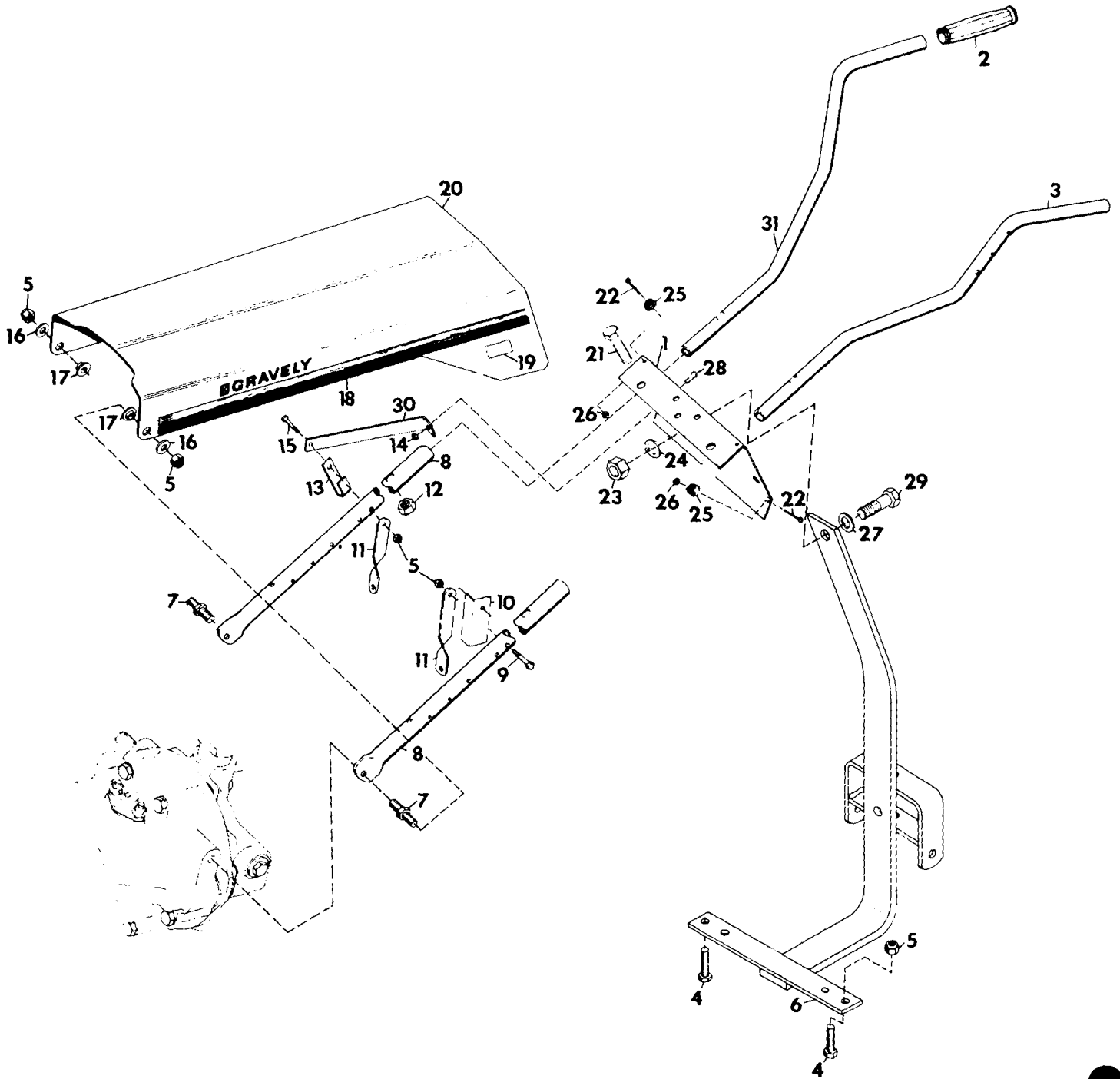
SWIFTAMATIC DIFFERENTIAL



SWIFTAMATIC DIFFERENTIAL

<u>ITEM NO.</u>	<u>PART NO.</u>	<u>DESCRIPTION</u>
1	15733	Ring, Retaining; .750 Shaft
2	15734	Spacer; .765 x 1.245 x .20
3	6741	Bearing, Needle Thrust; .752 x 1.240 x .078
4	6702	Gear, Differential Shifting
5	141234	Pin, Dowel; .375 x .375
6	6708	Gear, Spider Bevel
7	6709	Gear, Differential Bevel
8	18604	Bolt, Special; 5/16-18
9	18605	Wire, Bolt
10	15729	Gear, Worm 8 Start
11	22499	Pin, Spider
12	22498	Shifter, Splined Pinned
13	22512	Spacer, 1.000 x 1.375 x 1.125
14	120393	Washer, Flat; .344 x .688 x .065
15	6703	Gear, Pinned Bevel
16	6714	Pin, Dowel; .375 x .500
17	12126	Housing, Pinned
18	12131	Cone, Roller Bearing
19	12130	Cup, Roller Bearing
20	180120	Bolt, Hex; 3/8-16 x .750
21	22501	Spacer; 1.000 x 1.375 x .509
22	22503	Plate, End
23	11293	Bearing, Ball; 1.000 x 2.000 x .562
24	22497	Ring, Retaining; 2.000 Bore
25	22506	Seal, Oil; 1.188 x 2.000 x .250
26	22500	Race, Thrust; 2.002 x 2.740 x .031
27	6723	Arm, Shifter
28	13624	Bolt, Hex; 1/2-13 x 1.0 Nylon Insert
29	120396	Washer, Flat; .500 x 1.062 x .095
30	12594	Washer, Oil Drain
31	22493	Axle, Straight
32	180173	Bolt, Hex; 1/2-13 x 1.0
33	120384	Washer, Lock; 1/2 SP
34	22495	Housing, Axle
35	12597	Gasket, Axle Housing
36	12595	Shim, Axle Housing; .005
37	12596	Shim, Axle Housing; .020
38	419455	Nut, Lock; 5/16-18 Washer Insert
39	6724	Bushing, Nylon; .375 x .503 x .875
40	6743	Bearing, Needle Thrust; 2.002 x 2.740 x .078
41	10682	Spring, Compression; 2.000 x 7.20 x 15.5 Lb/in
42	6739	Shim, Clutch Worm Gear; .005
43	6740	Shim, Clutch Worm Gear; .020
44	22496	Housing, Clutch
45	12501	Cone, Roller Bearing
46	12500	Cup, Roller Bearing
47	22502	Nut, Lock; 3/8-10 L.T.
48	22507	Hub, Wheel; 4.80 x 4.00-8
	22551	Hub, Wheel; 18 x 8.50-8
49	11632	Clutch, Shifting
50	6719	Yoke, Shifting
51	11156	Clutch, Stationary
52	22494	Housing, 2-Speed Axle
53	12707	Washer, Oil Strainer Nut
54	6734	Bolt, Stationary Clutch
55	10505	Pivot, Stationary
56	6732	O-Ring; .438 x .625 x .094
57	6721	Pin, Clutch Sliding
58	419454	Nut, Lock; 1/4-20 Washer Insert
59	6726	Pin, Shifter
60	180024	Bolt, Hex; 1/4-20 x 1-1/4
61	10681	Spring, Extension; 2.50 x .62 x 5.8 Lb/in
62	124925	Nut, Jam; 3/8-24
63	10680	Bracket, 2-Speed Spring
64	120394	Washer, Flat; .406 x .812 x .065

FRAME ASSEMBLY (5200 & 5240 TRACTORS)

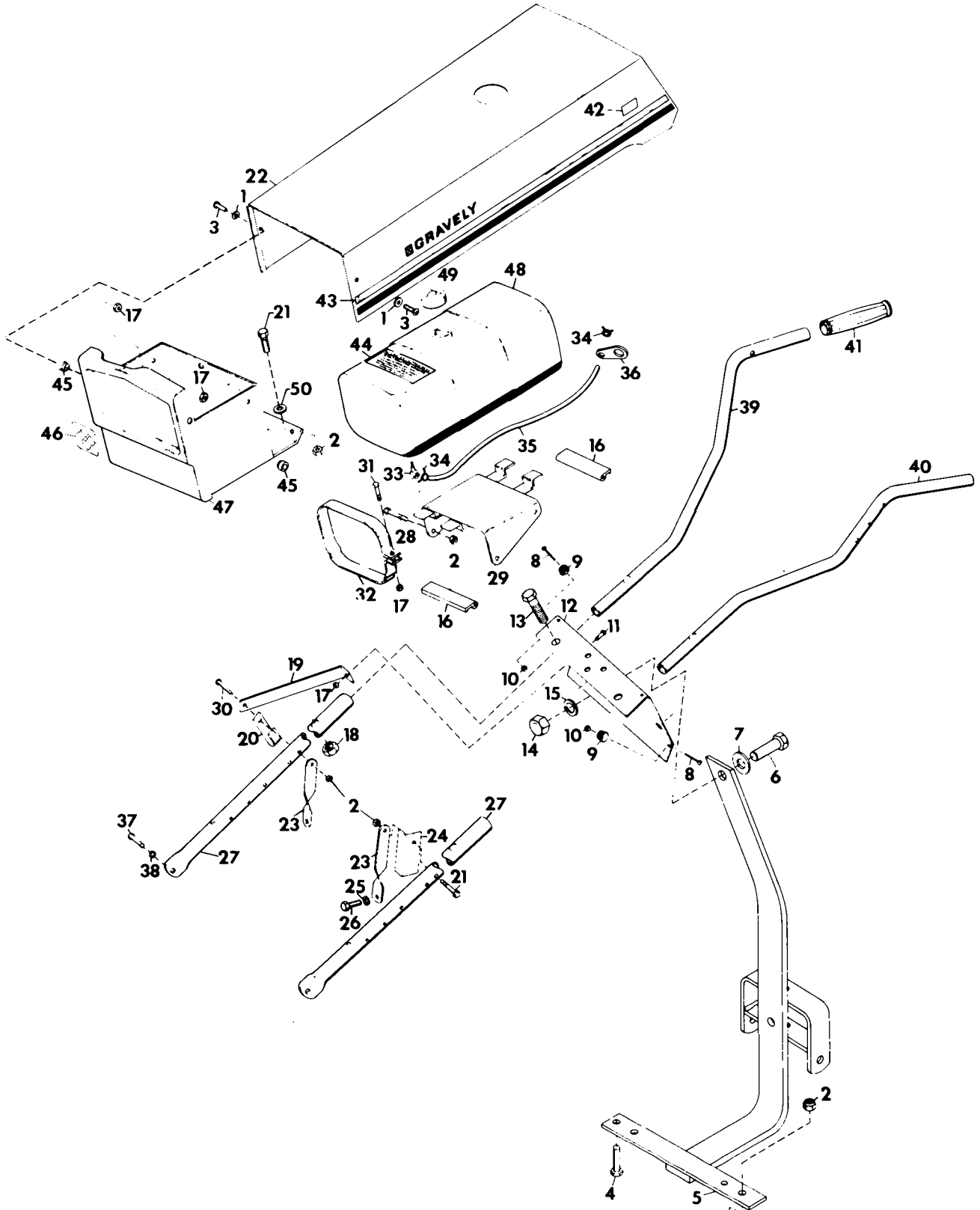


FRAME ASSEMBLY
(5200 & 5240 TRACTORS)

<u>ITEM NO.</u>	<u>PART NO.</u>	<u>DESCRIPTION</u>
1	21248	Panel, Instrument
2	10671	Grip, Hand
3	11982	Bar, R.H. Handle
4	180126	Bolt, Hex; 3/8-16 x 1.50
5	456004	Nut, Lock; 3/8-16 Washer Insert
6	22467	Weldment, Rear Hitch
7	21028	Stud, Hood
8	10643	Support, Tube
9	180132	Bolt, Hex; 3/8-16 x 2.25
10	10933	Stop, Rod
11	10655	Brace, Handle
12	120371	Nut, Hex; 1/2-20
13	10684	Retainer, 2-Speed Control (5240)
14	419454	Nut, Lock; 1/4-20 Washer Insert (5240)
15	180132	Bolt, Hex; 3/8-16 x 2.25 (5200)
	180134	Bolt, Hex; 3/8-16 x 2.50 (5240)
16	120394	Washer, Flat; .406 x .812 x .065
17	11138	Bushing, Rear Fender
18	21053	Decal, Stripe L.H.
	21052	Decal, Stripe R.H.
19		Decal, 5200
		Decal, 5240
20	21027	Hood
21	181705	Bolt, Hex; 1/2-20 x 2.0
22	159341	Screw, Machine; 6-32 x .625 Pan HD C-Recess
23	124589	Nut, Jam; 5/8-11
24	212574	Washer, Lock; 5/8 SP
25	18183	Bumper
26	427254	Nut, Lock; 6-32 Washer Insert
27	421879	Washer, Flat; .688 x 1.250 x .100
28	180018	Bolt, Hex; 1/4-20 x .625 (5240)
29	271547	Bolt, Hex; 5/8-11 x 1.500
30	10996	Brace, Instrument Panel (5240)
31	10658	Bar, L.H. Handle

FRAME ASSEMBLY

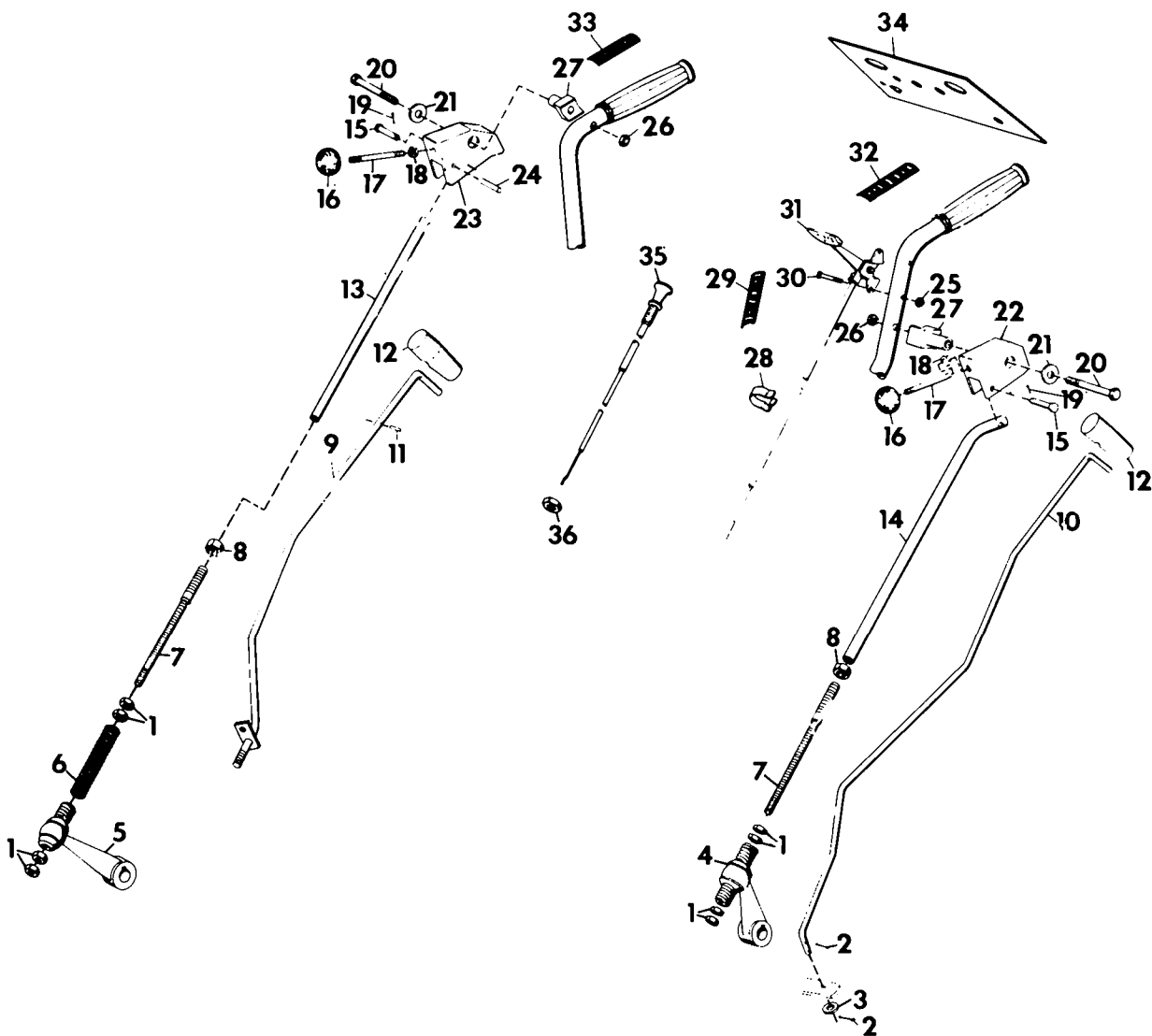
(5220, 5260, 5460, 5660 TRACTORS)



FRAME ASSEMBLY
(5220, 5260, 5460, 5660 TRACTORS)

<u>ITEM NO.</u>	<u>PART NO.</u>	<u>DESCRIPTION</u>
1	120392	Washer, Flat; .281 x .625 x .065
2	456004	Nut, Lock; 3/8-16 Washer Insert
3	160556	Screw, Machine; 1/4-20 x 1.0 Pan HD
4	180126	Bolt, Hex; 3/8-16 x 1.50
5	22467	Weldment, Rear Hitch (5220, 5260)
	22466	Weldment, Rear Hitch (5460, 5660)
6	271547	Bolt, Hex; 5/8-11 x 1.50
7	421879	Washer, Flat; .406 x .812 x .065
8	159341	Screw, Machine; 6-32 x .625 Pan HD C-Recess
9	18183	Bumper
10	427254	Nut, Lock; 6-32 Washer Insert
11	180018	Bolt, Hex; 1/4-20 x .625
12	21248	Panel, Instrument
13	181705	Bolt, Hex; 1/2-20 x 2.0
14	124589	Nut, Hex; 5/8-11
15	121574	Washer, Lock; 5/8 SP
16	18217	Moulding
17	419454	Nut, Lock; 1/4-20 Washer Insert
18	120371	Nut, Jam; 1/2-20
19	10996	Brace, Instrument Panel (5260, 5460, 5660)
20	10684	Retainer, 2-Speed Control (5260, 5460, 5660)
21	180132	Bolt, Hex; 3/8-16 x 2.25
22	10650	Hood
23	10655	Brace, Handle
24	10933	Stop, Rod
25	131100	Washer, Lock; 7/16 SP
26	180149	Bolt, Hex; 7/16-14 x 1.50
27	10643	Support, Tube
28	180129	Bolt, Hex; 3/8-16 x 1.875
29	10637	Weldment, Fuel Tank Bracket
30	180132	Bolt, Hex; 3/8-16 x 2.25 (5220)
	180134	Bolt, Hex; 3/8-16 x 2.5 (5260, 5460, 5660)
31	180024	Bolt, Hex; 1/4-20 x 1.250
32	10640	Strap, Fuel Tank
33	7354	Valve and Strainer
34	7216	Clamp, Fuel Hose
35	10896	Line, Fuel
36	21489	Bracket, Fuel Line (5220, 5260)
37	180122	Bolt, Hex; 3/8-16 x 1.0
38	120382	Washer, Lock; 3/8 SP
39	11982	Bar, Right Handle
40	10658	Bar, Left Handle
41	10671	Grip, Hand
42		Decal, 5220
		Decal, 5260
		Decal, 5460
		Decal, 5660
43	21051	Decal, Hood Stripe LH
	21050	Decal, Hood Stripe RH
44	11989	Decal, Electrical System Warning
45	12117	Hood, Pivot
46	10697	Decal, Front Grille
47	10644	Weldment, Grille
48	10636	Assembly, Fuel Tank
49	10756	Cap, Gas Tank
50	120394	Washer, Flat; .406 x .812 x .065

CONTROLS

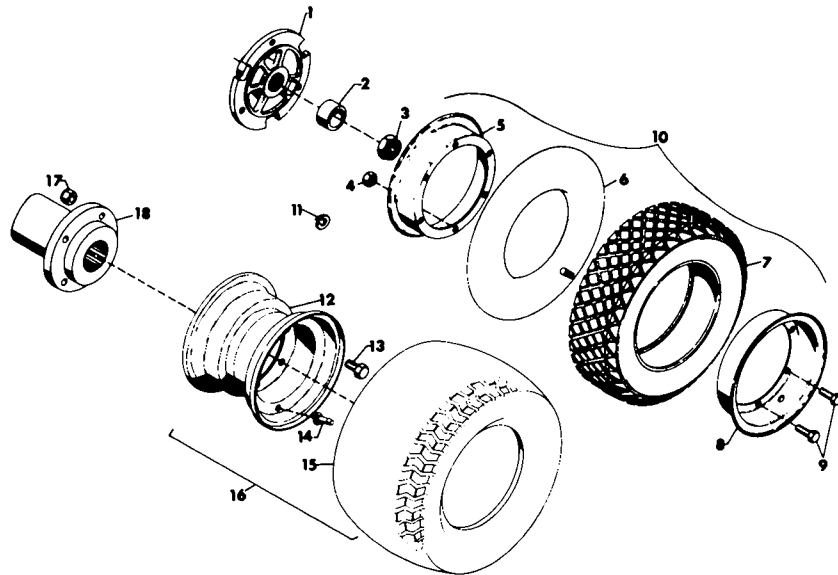


ITEM NO.	PART NO.	DESCRIPTION
1.	124829	Nut, Jam; 3/8-16
2.	121224	Pin, Cotter; 3/32 x 1
3.	120394	Washer, Flat; 13/32 x 13/16 x .065
4.	21383A1	Assembly, Hi-Lo Lever
5.	21384A1	Assembly, Fwd-Rev Lever
6.	21506P1	Spring, Fwd-Rev Neutral Return
7.	20269P1	Rod, Control Extension
8.	120238	Nut, Jam; 1/2-13
9.	10677A1	Weldment, 2-Speed Control Rod (5240, 5260, 5460, 5660)
10.	10932P1	Rod, Attachment Throwout
11.	423664	Pin, Spring; 3/32 x 11/16 (5240, 5260, 5460, 5660)
12.	10683P1	Handle, Rubber Shifter
13.	20267P1	Rod, Fwd-Rev Control
14.	20268P1	Rod, Hi-Lo Control
15.	10672P1	Pin, Clevis; .375 x 1.250
16.	10670P1	Knob, Control
17.	10669P1	Rod, Shifter
18.	272123	Nut, Jam; 7/16-20 Hex
19.	177923	Pin, Cotter; 1/8 x 3/4
20.	180192	Bolt, Hex; 1/2-13 x 3 1/2

CONTROLS

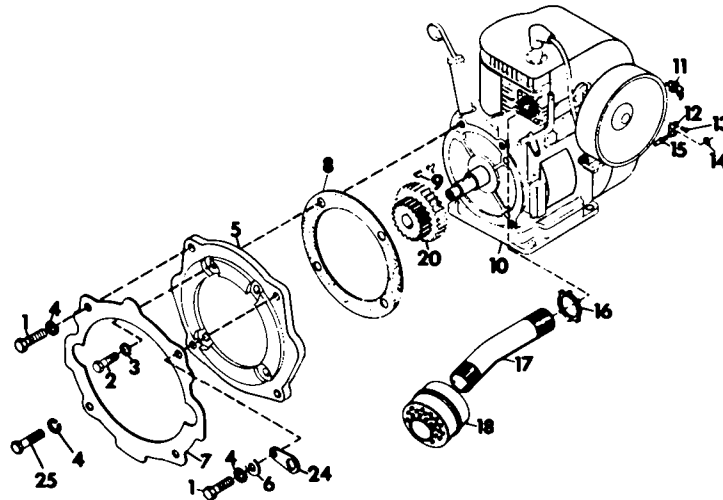
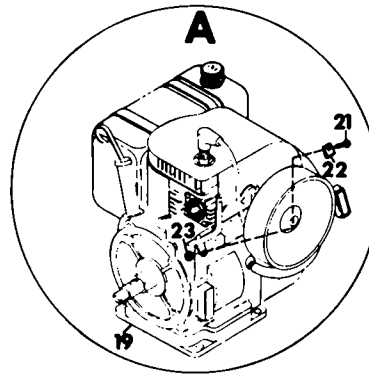
ITEM NO.	PART NO.	DESCRIPTION
21.	120396	Washer, Flat; 17/32 x 1 1/16 x .095
22.	10666P1	Support, Hi-Lo Shifter Rod
23.	11985P1	Support, Fwd-Rev Shifter Rod
24.	453670	Pin, Spring; 1/4 x 1 1/8
25.	190254	Nut, Lock; 10-24 Washer Insert
26.	20541P1	Nut, Lock; 1/2-13 Washer Insert Thin
27.	10667P1	Pivot, Handle Lever
28.	8260P1	Clip, Conduit
29.	21091P1	Decal, Gear Shift
30.	436738	Screw, Machine; 10-24 x 1 1/2 Pan HD
31.	21103P1	Lever, Throttle Control; (5200, 5220, 5240, 5260)
	21196P1	Lever, Throttle Control; (5460, 5660)
32.	21092P1	Decal, Throttle
33.	21090P1	Decal, Fwd-Rev
34.	21106P1	Decal, Instrument Panel (Manual)
	21105P1	Decal, Instrument Panel (Electric)
35.	10696P1	Control, Choke (5220, 5260, 5460, 5660)
36.	124925	Nut, Jam; 3/8-24 (5220, 5260, 5460, 5660)

WHEEL ASSEMBLY



ITEM NO.	PART NO.	DESCRIPTION
1	22507	Hub, Wheel
2	22512	Spacer; 1.000 x 1.375 x 1.125
3	22502	Nut, Lock; 3/4-10 L.T.
4	124829	Nut, Jam; 3/8-16
5	12674	Disc, Inner Wheel
6	11637	Tube, Puncture Proof
	11645	Tube, 5.00 x 8 (18 x 6.50-8)
7	13836	Tire, Tractor D.T. (4.80 x 4.00-8)
	13835	Tire, Tractor G.G. (4.80 x 4.00-8)
	19562	Tire, 18 x 6.50-8
	18762	Tire, Semi-Pneumatic (Tubeless)
8	12673	Disc, Wheel
9	428638	Bolt, Hex; 3/8-16 x .625
	180120	Bolt, Hex; 3/8-16 x .750 (Semi-Pneumatic Wheels)
10	10141	Assembly, Super Grip Wheel
	10142	Assembly, Diamond Tread Wheel
	19563	Assembly, 18 x 6.50-8
	21221	Assembly, Semi-Pneumatic Wheel
11	120382	Washer, Lock; 3/8 SP (Semi-Pneumatic Wheel Assy.)
12	23267	Rim, 18 x 8.50-8
13	180175	Bolt, Hex; 1/2-13 x 1.250
14	19191	Stem, Valve
15	15222	Tire, 18 x 8.50-8
16	23268	Assembly, Mpe; 18 x 3.50-8
17	435507	Nut, Lock; 1/2-13 Washer Insert
18	22551	Hub, Wheel; 18 x 8.50-8

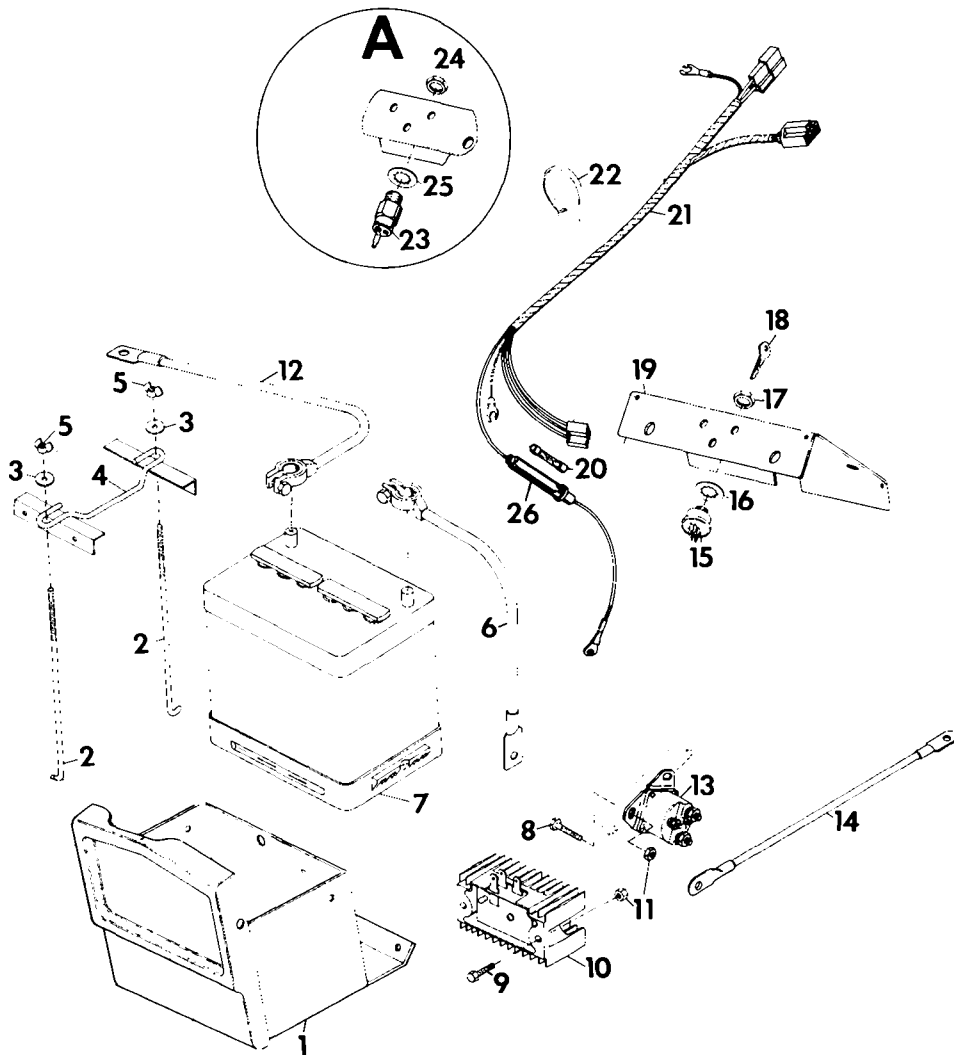
ENGINE AND EXHAUST SYSTEM



<u>ITEM NO.</u>	<u>PART NO.</u>	<u>DESCRIPTION</u>
1	180149	Bolt, Hex; 7/16-14 x 1-1/2
2	180121	Bolt, Hex; 3/8-16 x 7/8 (5200, 5220, 5240, 5260)
	180122	Bolt, Hex; 3/8-16 x 1 (5460, 5660)
3	131099	Washer, Lock; 3/8 SP Heavy
4	131100	Washer, Lock; 7/16 SP Heavy
5	14938	Adapter, Engine (5200, 5220, 5240, 5260)
	17031	Adapter, Engine (5460, 5660)
6	130388	Washer, Flat; 7/16 x 1 x .083
7	10635	Gasket, Chassis to Adapter
8	10732	Gasket, Engine to Adapter (5460, 5660)
	15718	Gasket, Engine to Adapter (5200, 5220, 5240, 5260)
9	124545	Key, Woodruff; 5/32 x 5/8 Hard
10	21137	Engine, 10 HP (5460)
	21138	Engine, 12 HP; Electric Start (5660)
11	7331	Clip, Speed
12	18522	Bracket
13	160515	Screw, Machine; 1/4-20 x 1/2 Pan HD
14	120375	Nut, Hex; 1/4-20
15	18521	Adapter, Conduit
16	10866	Nut, Conduit; 1" Pipe
17	10865	Tube, Muffler
18	8227	Muffler
19	21042	Engine, 8 HP; Manual Start (5200, 5240)
	21036	Engine, 8 HP; Electric Start (5220, 5260)
20	17838	Gear; 10/12 DP, 21/30 Teeth
21	159920	Screw, Machine; 10-24 x 1/2 Pan HD
22	15453	Clip
23	190254	Nut, Lock; 10-24 Washer Insert
24	21489	Bracket, Fuel Line (5220, 5260)
25	180147	Bolt, Hex; 7/16-14 x 1-1/4 (5200, 5220, 5240, 5260)
	180146	Bolt, Hex; 7/16-14 x 1-1/8 (5460, 5660)

NOTE: Circle "A" Pertains to 8 HP Tractors Only

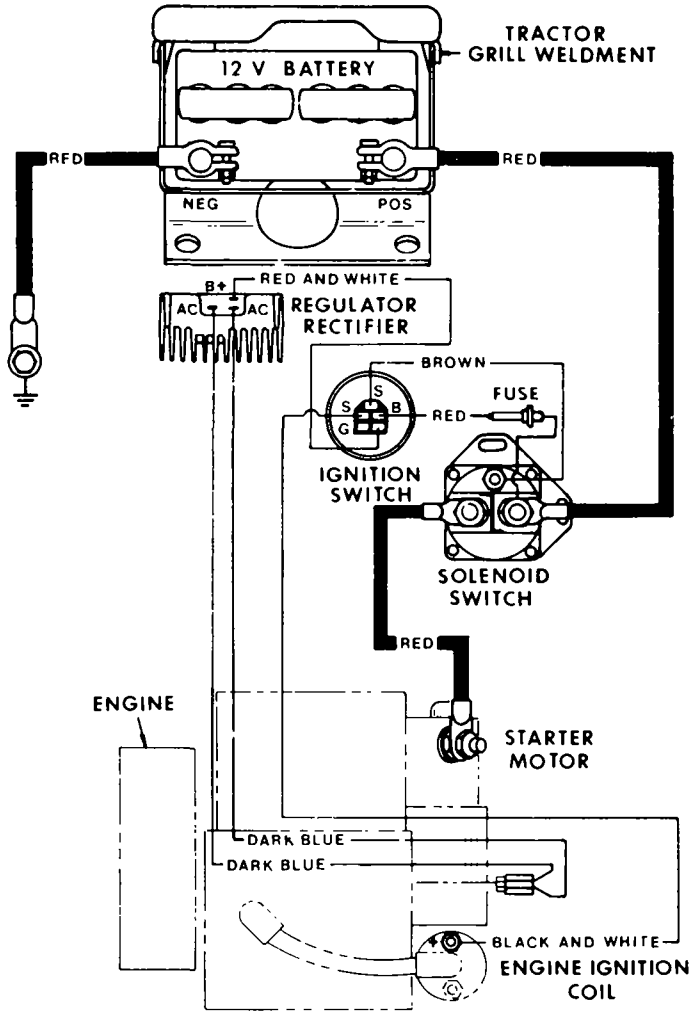
ELECTRICAL SYSTEM



<u>ITEM NO.</u>	<u>PART NO.</u>	<u>DESCRIPTION</u>
1.	10644A1	Weldment, Grille
2.	12894P1	Bolt, Hold Down
3.	446354	Washer, Flat; 5/16 x 7/8 x .065
4.	10633P1	Clamp, Battery Hold Down
5.	10413P1	Nut, Wing; 1/4-20 Washer Insert
6.	6980P1	Cable, Negative Battery
7.	7274P1	Battery, 12 Volt
8.	180042	Bolt, Hex; 1/4-20 x 1 3/4
9.	180020	Bolt, Hex; 1/4-20 x 3/4
10.	18009P1	Regulator, Rectifier
11.	120375	Nut, Hex; 1/4-20
12.	21368P1	Cable, Positive Battery
13.	7277P1	Switch, Magnetic
14.	6981P1	Cable, Magnetic Switch to Starter
15.	19223P1	Switch, Ignition
16.	19667P1	Washer, Lock; 9/16 Internal Tooth
17.	19666P1	Nut, Jam; 9/16-24
18.	18570P1	Key, Ignition Switch
19.	21248P1	Panel, Instrument
20.	14893P1	Fuse, 30 AMP; Acc 30
21.	19222P1	Harness, Wiring
22.	10629P1	Tie, Cable
23.	21104P1	Switch, Ignition
24.	18585P1	Nut, Jam; 5/8-32
25.	18586P1	Washer, Lock; 5/8 Internal Tooth
26.	17124P1	Holder, 30 AMP Fuse Assembly

NOTE: Circle "A" Pertains to Manual Start Tractors Only

WIRING DIAGRAM (FOR ELECTRIC START TRACTORS)



WIRING DIAGRAM (FOR MANUAL START TRACTORS)

